

Name _____ Class Number _____ Class Period _____

Finding Patterns in Data

2	4	6	8	10					
---	---	---	---	----	--	--	--	--	--

Pattern _____

17	19	21	23	25					
----	----	----	----	----	--	--	--	--	--

Pattern _____

48	44	40	36	32					
----	----	----	----	----	--	--	--	--	--

Pattern _____

27	25	23	21	19					
----	----	----	----	----	--	--	--	--	--

Pattern _____

40	38	36	34	32					
----	----	----	----	----	--	--	--	--	--

Pattern _____

-5	-3	-1	1	3					
----	----	----	---	---	--	--	--	--	--

Pattern _____

96	88	80	72	64					
----	----	----	----	----	--	--	--	--	--

Pattern _____

13	11	9	7	5					
----	----	---	---	---	--	--	--	--	--

Pattern _____

7	14	21	28	35					
---	----	----	----	----	--	--	--	--	--

Pattern _____

22	20	18	16	14					
----	----	----	----	----	--	--	--	--	--

Pattern _____

12	18	24		36		48			66
----	----	----	--	----	--	----	--	--	----

Pattern _____

-64		-48		-32	-24			0	8
-----	--	-----	--	-----	-----	--	--	---	---

Pattern _____

-8	-6		-2		2		6		10
----	----	--	----	--	---	--	---	--	----

Pattern _____

	-3	0		6	9	12		18	21
--	----	---	--	---	---	----	--	----	----

Pattern _____

	18	24			42		54		
--	----	----	--	--	----	--	----	--	--

Pattern _____

10		15		5		10			10
----	--	----	--	---	--	----	--	--	----

Pattern _____

4		38		72	89				157
---	--	----	--	----	----	--	--	--	-----

Pattern _____

2	5		6		7				9
---	---	--	---	--	---	--	--	--	---

Pattern _____

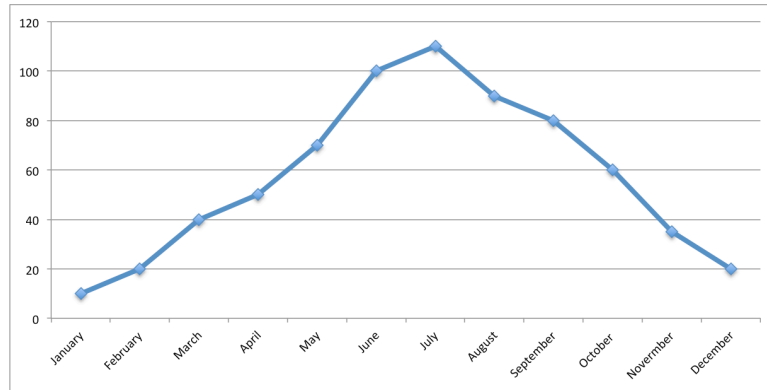
1	2	8		15					30
---	---	---	--	----	--	--	--	--	----

Pattern _____

	6		12		9		15	3	
--	---	--	----	--	---	--	----	---	--

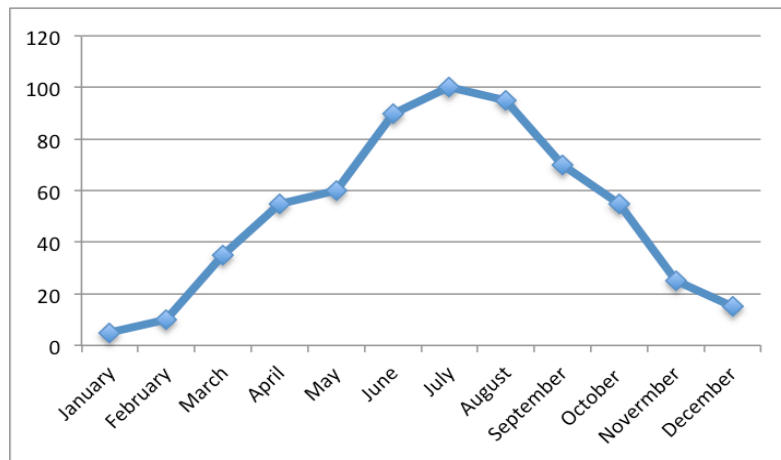
Pattern _____

Finding Patterns in Graphs



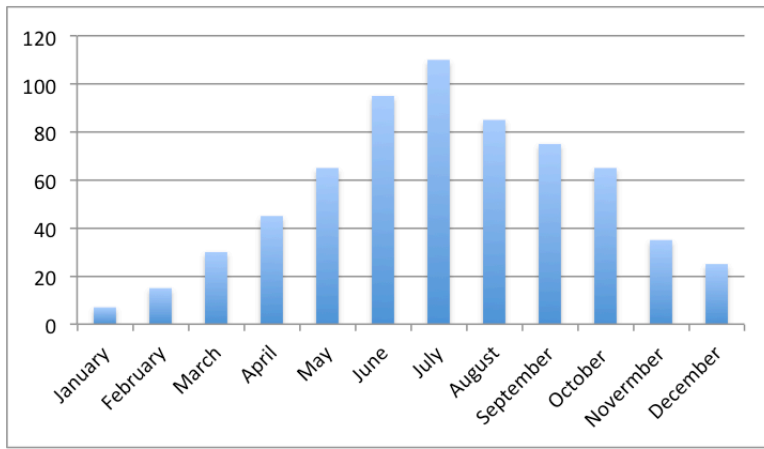
Graph #1

1. What evidence can you see in the above graph?
 - a.
 - b.
 - c.
 - d.
 2. What inference can you draw based on the evidence you listed above?
-
-



Graph #2

3. NOW...looking at graph #2 evidence can you see?
 - a.
 - b.
 - c.
 - d.
4. Looking at Graph #1 and Graph #2 what patterns can you see between them?
 - a.
 - b.
 - c.
 - d.



Graph #3

5. Look at Graph #3 and find the evidence.
 - a.
 - b.
 - c.
 - d.
6. When you compare graphs #1, #2 and #3 start looking at the patterns. Remember...LOOK at the EVIDENCE in each graph.

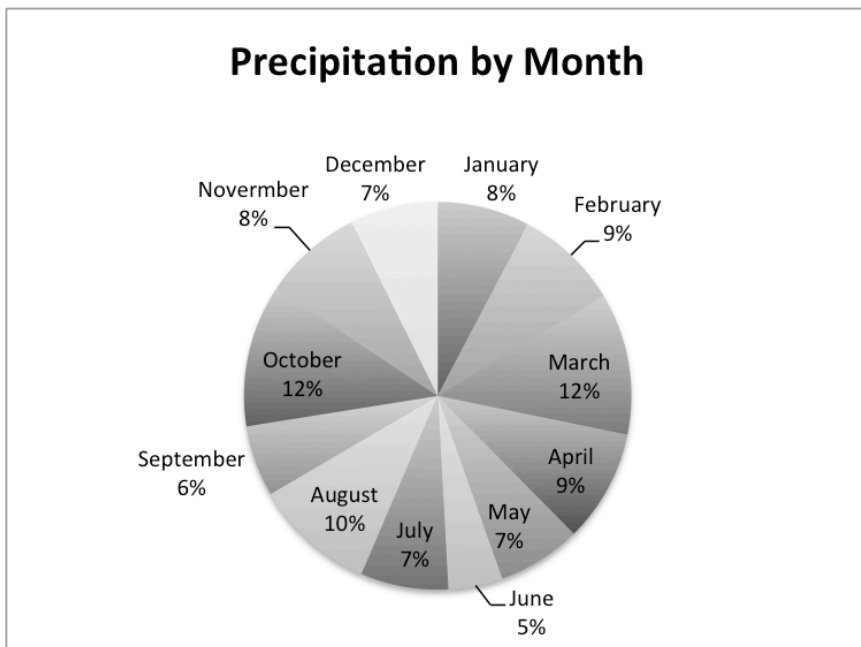
Patterns in the months:

Month	Jan.	Feb.	Mar.	Apr.	May	June	July	Aug.	Sept.	Oct.	Nov.	Dec.
Range												

Patterns in a series of months:

Months				
Season				
Range				

7. If you were to use the evidence and the patterns you have seen in the three graphs what month of the year would you suggest to have an outdoor party? _____.



NOW... review the following graph and decide if you want to change your answer to the above question.

What month would you suggest the party be held after reviewing the new graph?

What evidence are you using to support your new answer?